

Code design and Architecture

# Embedded Systems

Muhammed Essa

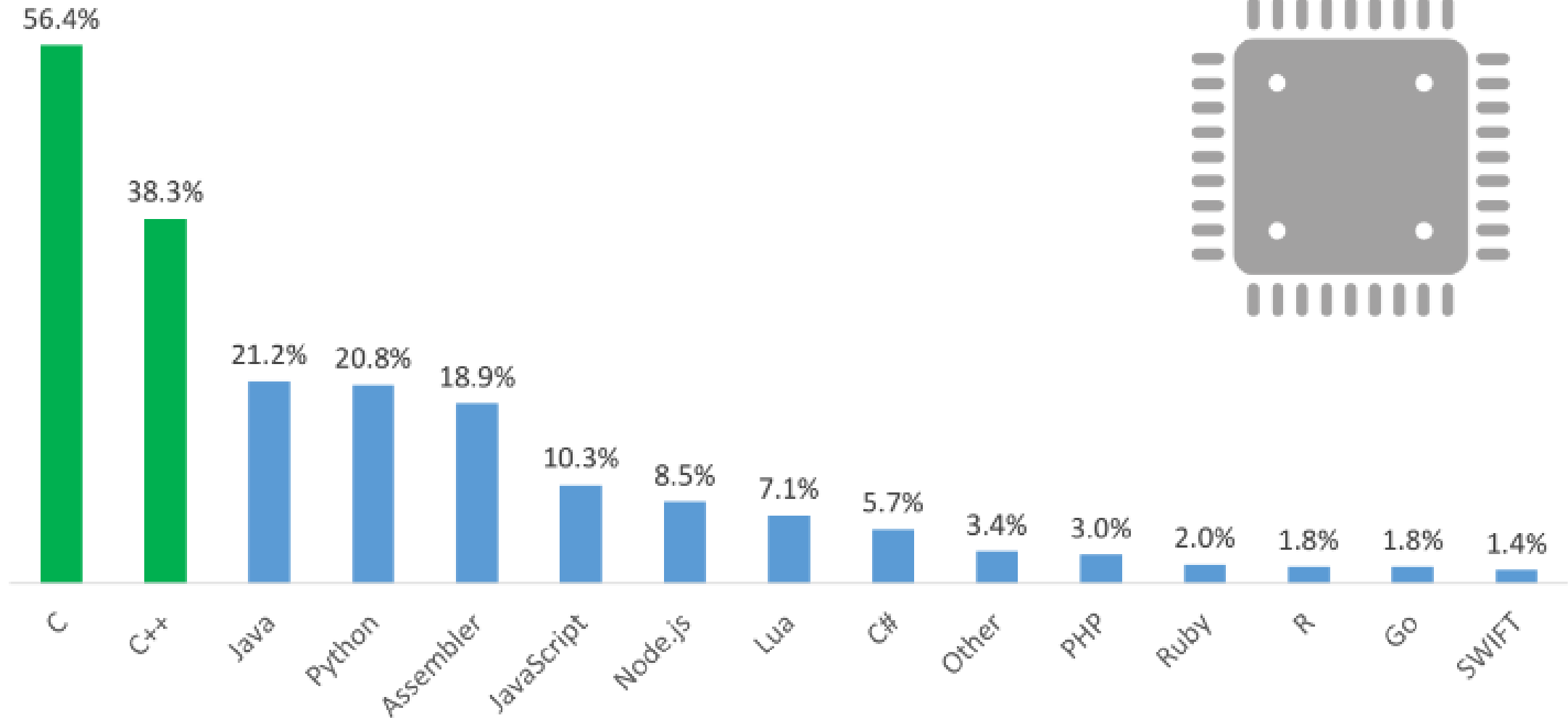
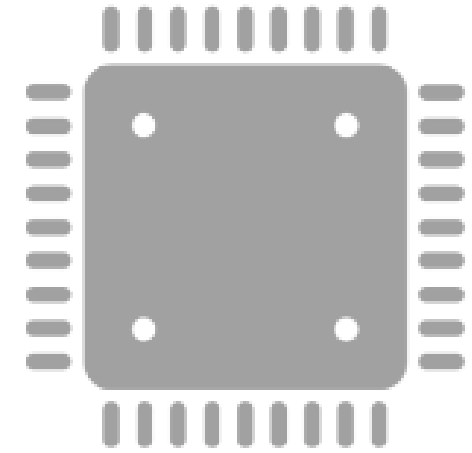


2<sup>nd</sup> Annual Workshop on Embedded Systems



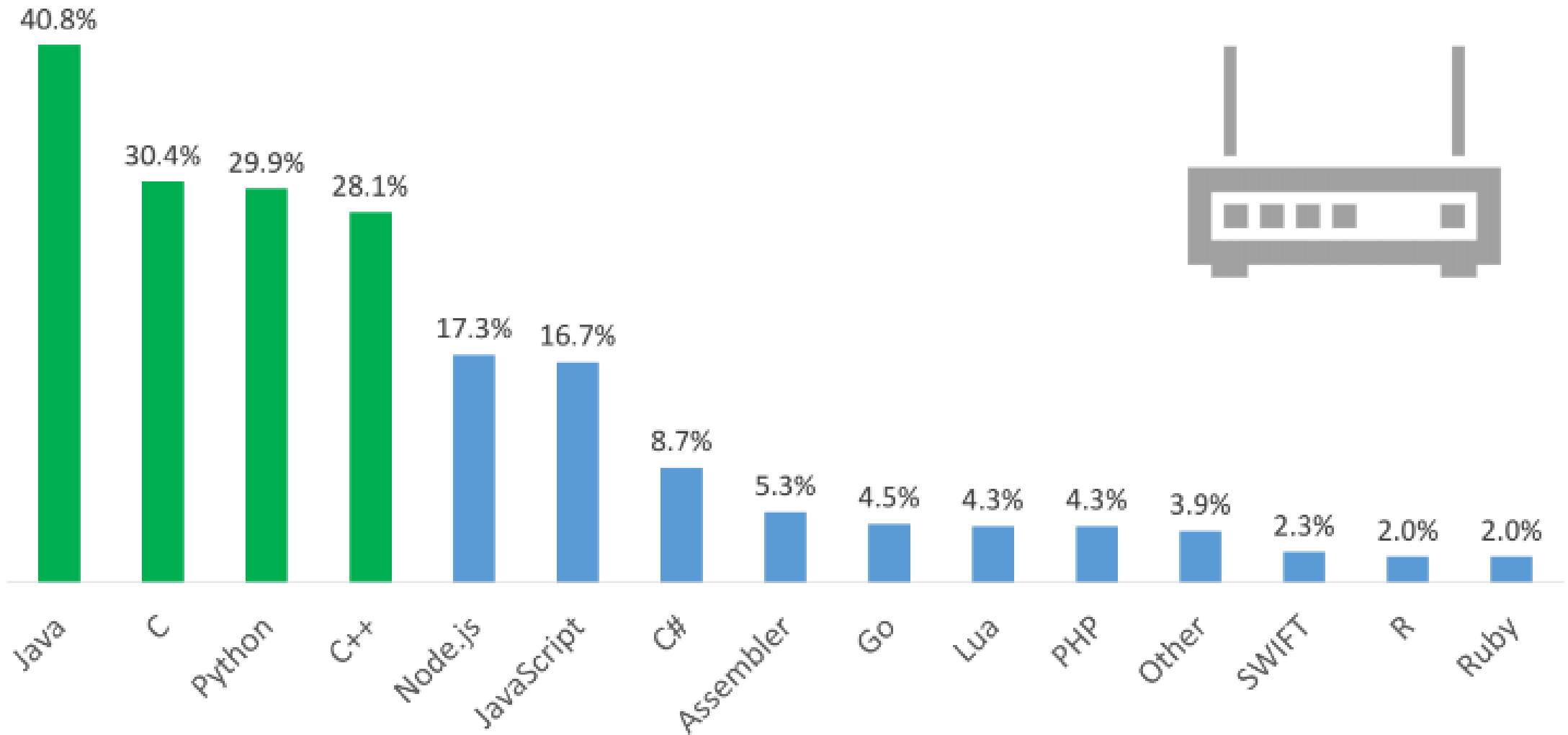
# PROGRAMMING LANGUAGES – CONSTRAINED DEVICES

---



# PROGRAMMING LANGUAGES – IOT GATEWAYS

---



phone

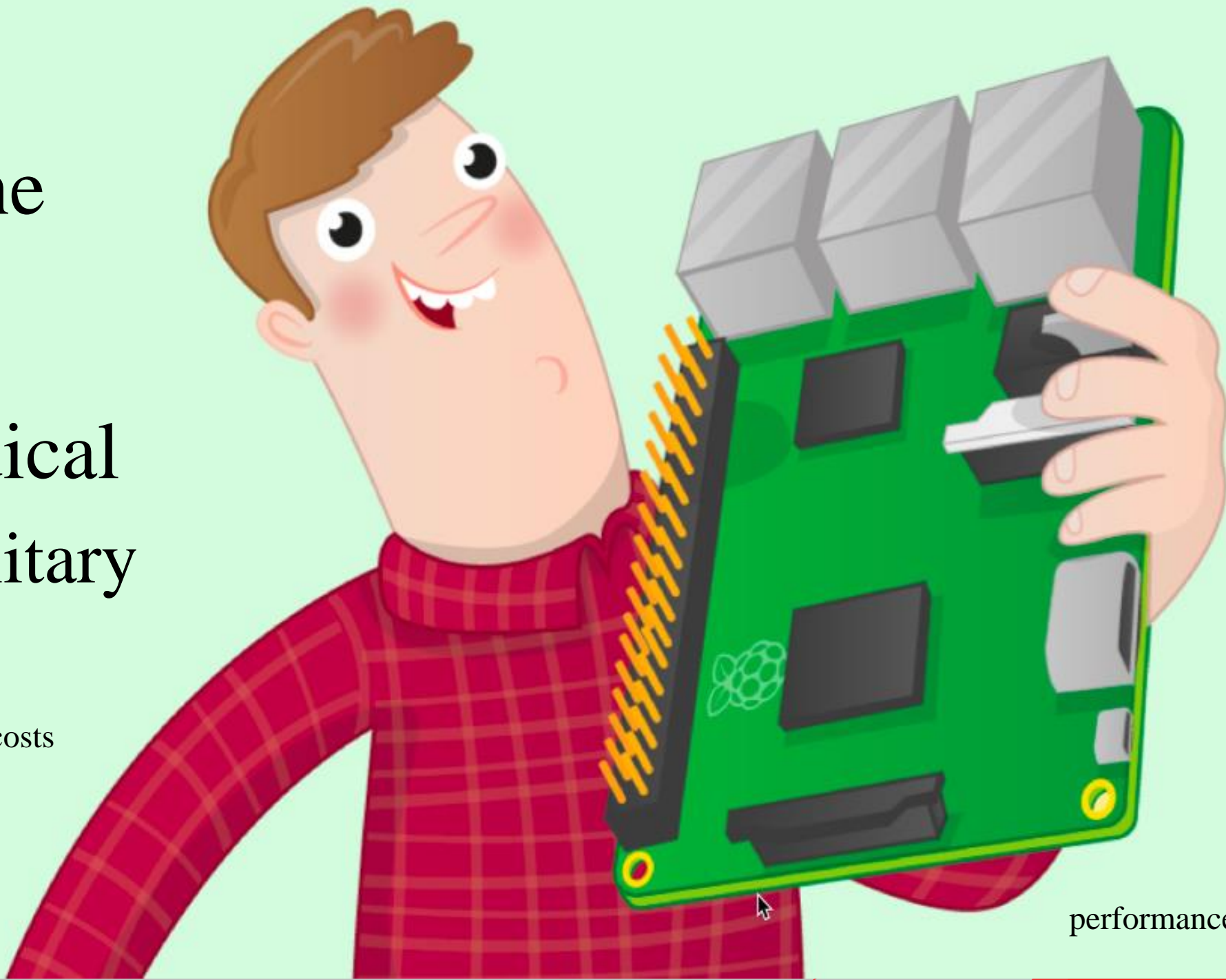
medical

military

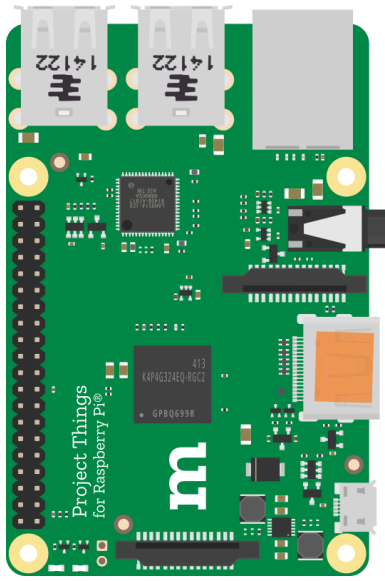
manufacturing costs

design costs

time-to-market



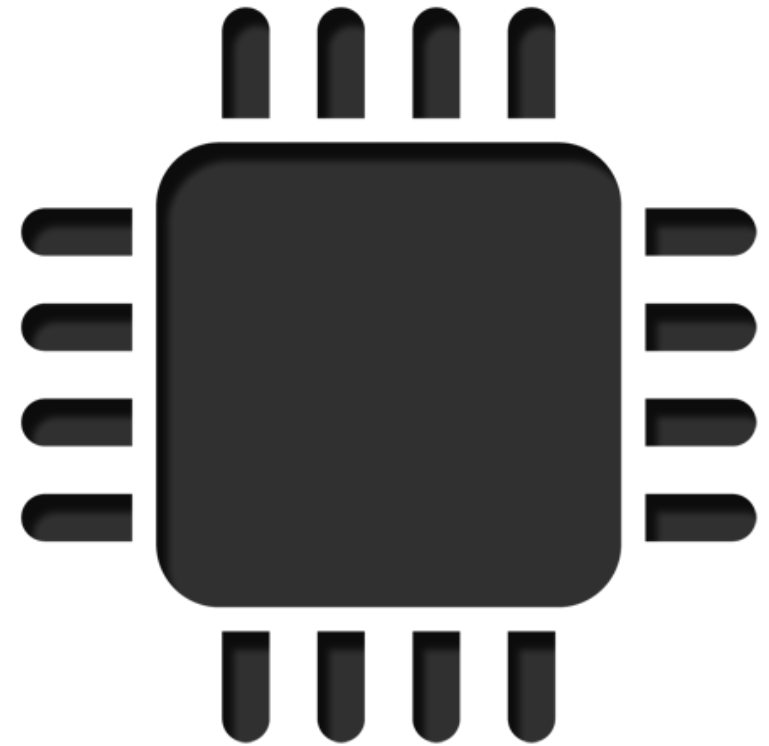
performance and power more



Software

and

Hardware



# Embedded systems engineering



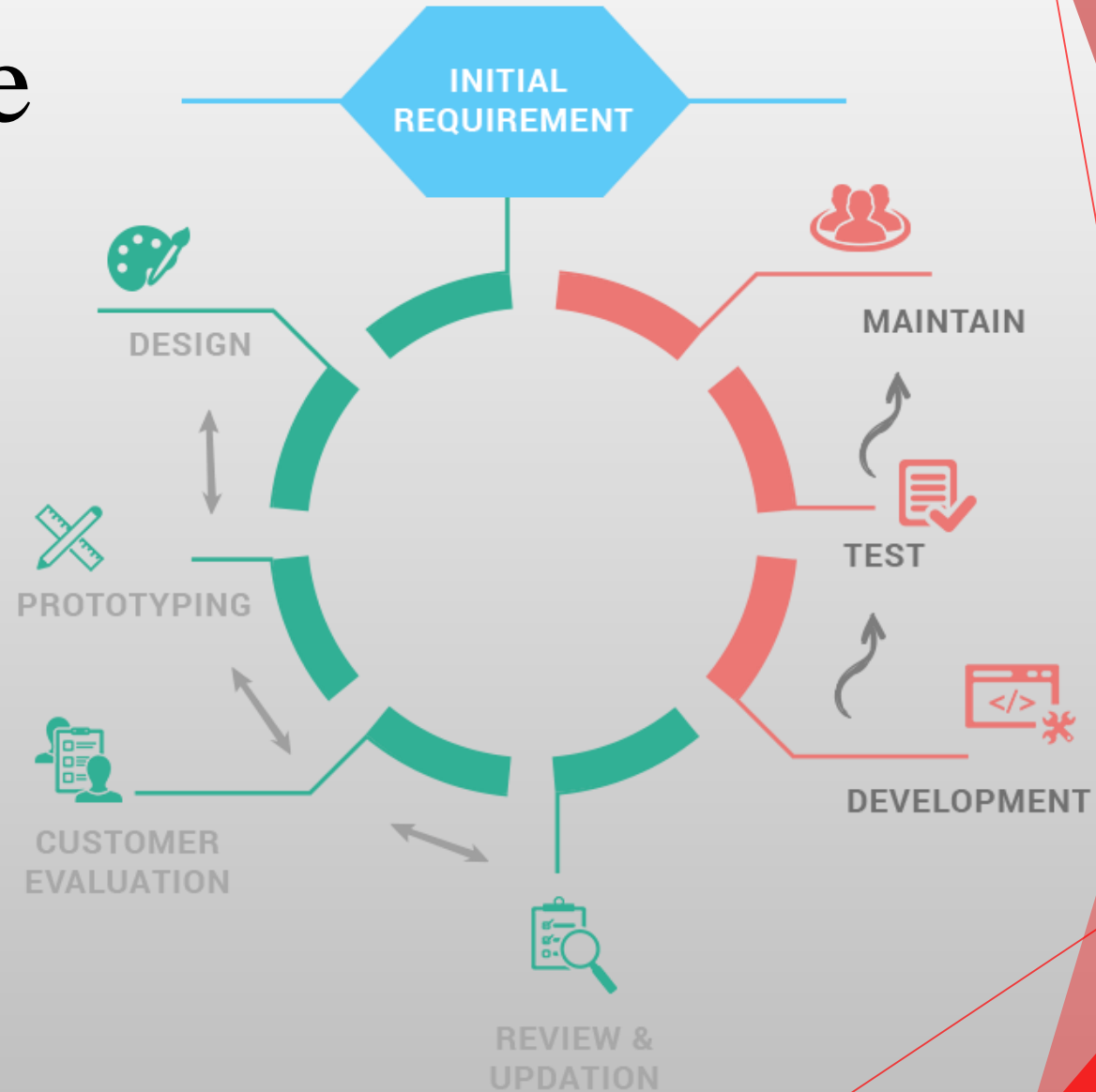


# Development tools

- 1- Simulators & Emulator
- 2- Compilers & Installers
- 3- debuggers



Maintainable  
Testable  
Robust  
Efficient







**ANSI**

***American National Standards Institute***



**IEEE**



International  
Organization for  
Standardization

# Google Java Style Guide

## Table of Contents

### [1 Introduction](#)

[1.1 Terminology notes](#)

[1.2 Guide notes](#)

### [2 Source file basics](#)

[2.1 File name](#)

[2.2 File encoding: UTF-8](#)

[2.3 Special characters](#)

### [3 Source file structure](#)

[3.1 License or copyright information, if present](#)

[3.2 Package statement](#)

[3.3 Import statements](#)

[3.4 Class declaration](#)

### [4 Formatting](#)

[4.1 Braces](#)

[4.2 Block indentation: +2 spaces](#)

[4.3 One statement per line](#)

[4.4 Column limit: 100](#)

[4.5 Line-wrapping](#)

[4.6 Whitespace](#)

[4.7 Grouping parentheses: recommended](#)

[4.8 Specific constructs](#)

### [5 Naming](#)

[5.1 Rules common to all identifiers](#)

[5.2 Rules by identifier type](#)

[5.3 Camel case: defined](#)

### [6 Programming Practices](#)

[6.1 @Override: always used](#)

[6.2 Caught exceptions: not ignored](#)

[6.3 Static members: qualified using class](#)

[6.4 Finalizers: not used](#)

### [7 Javadoc](#)

[7.1 Formatting](#)

[7.2 The summary fragment](#)

[7.3 Where Javadoc is used](#)

## 1 Introduction

This document serves as the **complete** definition of Google's coding standards for source code in the Java™ Programming Language. A Java source file is described as being *in Google Style* if and only if it adheres to the rules herein.



google / styleguide

Watch 977 Star 13,900

Code Issues 109 Pull requests 80 Projects 0 Insights

Branch: gh-pages styleguide / README.md

eccentricon Revert "Project import generated by Copybara."

9 contributors

55 lines (46 sloc) 2.95 KB

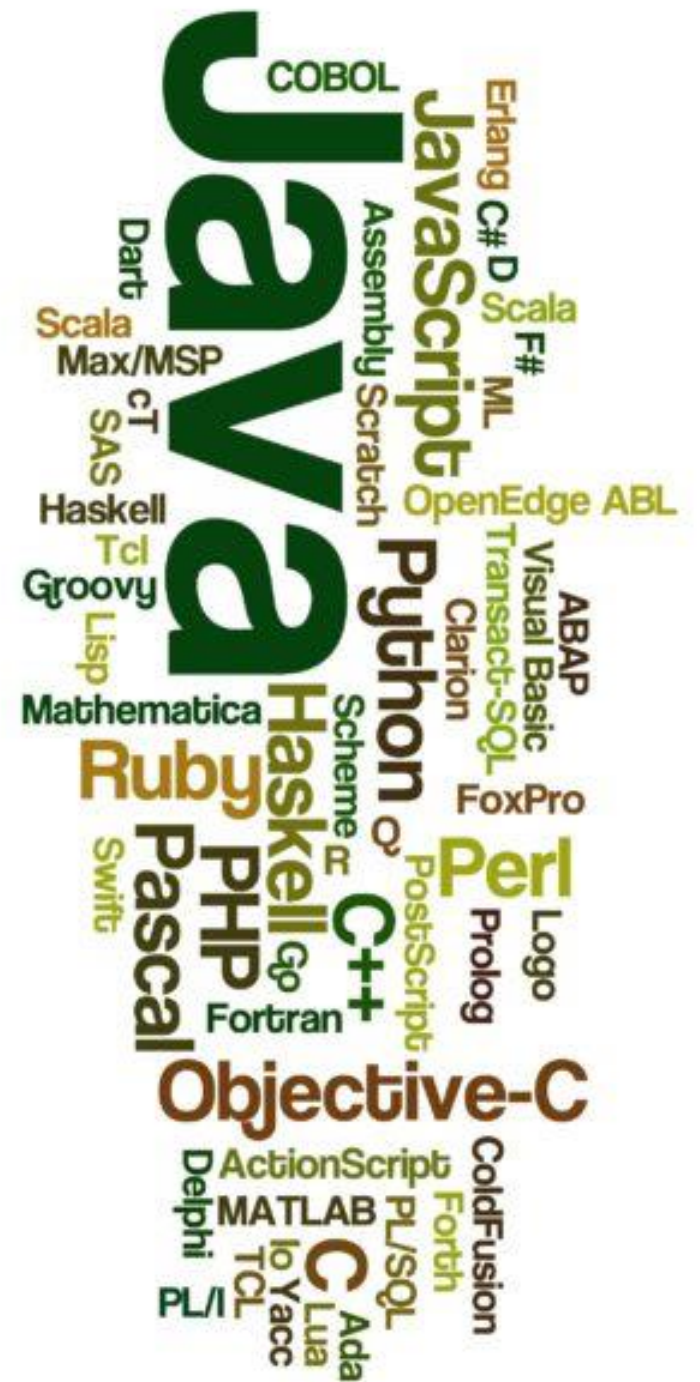
Raw Blame History

# Google Style Guides

Every major open-source project has its own style guide: a set of conventions (sometimes arbitrary) about how to code for that project. It is much easier to understand a large codebase when all the code in it is in a consistent style.

"Style" covers a lot of ground, from "use camelCase for variable names" to "never use global variables" to "never use exceptions." This project ([google/styleguide](https://google.github.io/styleguide/)) links to the style guidelines we use for Google code. If you are working on a project that originated at Google, you may be pointed to this page to see the style guides that apply to that project.

This project holds the [C++ Style Guide](#), [Objective-C Style Guide](#), [Java Style Guide](#), [Python Style Guide](#), [R Style Guide](#), [Shell Style Guide](#), [HTML/CSS Style Guide](#), [JavaScript Style Guide](#), [AngularJS Style Guide](#), [Common Lisp Style Guide](#), [Vimscript Style Guide](#). This project also contains [cpplint](#), a tool to assist with style guide compliance, and [google-style.el](#), an Emacs settings file for Google style.

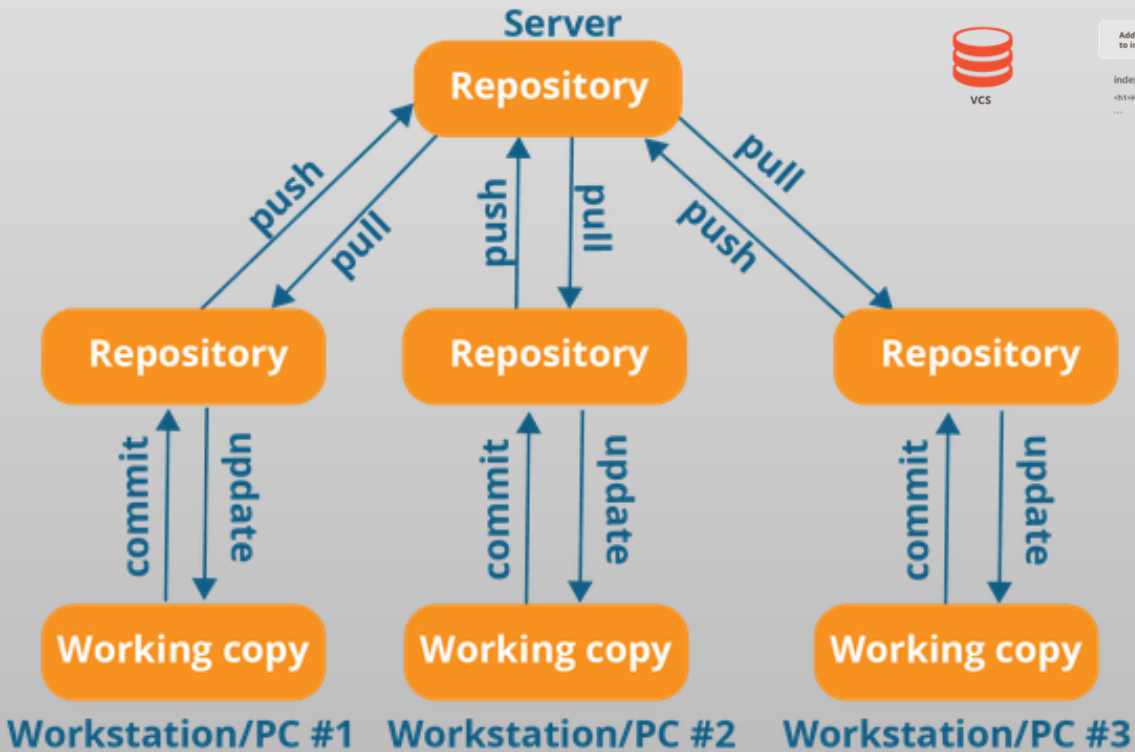


# Version control system

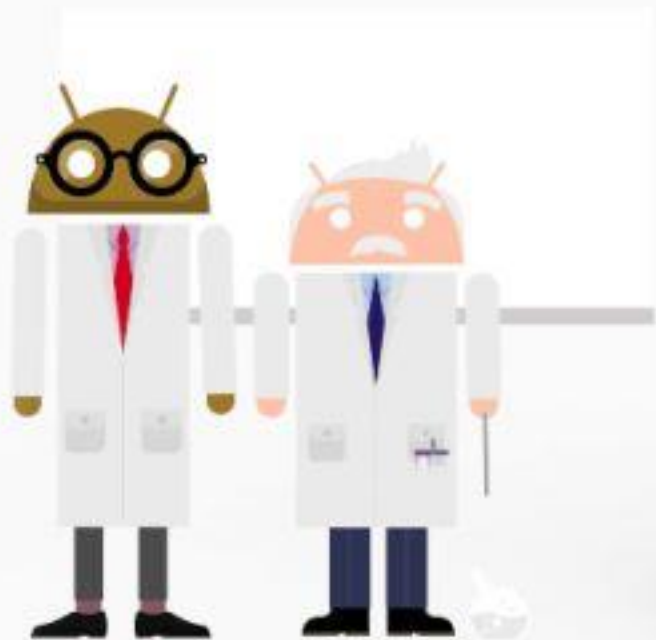


# git

Distributed version control system



# Power consumption





# Citizen Lab



< IRAQ

Info@codeforiraq.org

/>



2<sup>nd</sup> Annual Workshop on Embedded Systems

Tunisia

Sudan

Algeria

Just type : Muhammed Essa

@Google+, Facebook , Twitter , linkedin

< IRAQ />

BASRA , BAGHDAD , NAJAF , KARBALA , KUT , BABIL , MOSUL , KIRKUK , DIYALA

AI ANBAR , DHI QAR , AL-QADISIYYAH , DOHUK , ERBIL MAYSAN , MUTHANNA , SALADIN , SULAYMANIYAH